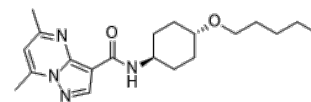


Product Name : LTI-291
Cat. No. : PC-24167
CAS No. : 1919820-28-2
Molecular Formula : C₂₀H₃₀N₄O₂
Molecular Weight : 358.49
Target : Other Targets
Solubility : 10 mM in DMSO



CAS: 1919820-28-2

Biological Activity

Pariceract (LTI-291) is an allosteric, CNS-penetrable glucosylceramidase beta (glucocerebrosidase, GCase) activator. Pariceract (LTI-291) at concentrations of 0.1 and 1.0 μ M increases wild type GCase activity by 25% and 130%, respectively. Pariceract (LTI-291) shows potential for parkinson's disease carrying a GBA1 mutation.

References

den Heijer JM, et al. Br J Clin Pharmacol. 2021 Sep;87(9):3561-3573.

Caution: Product has not been fully validated for medical applications. Lab Use Only!

E-mail: tech@probechem.com